

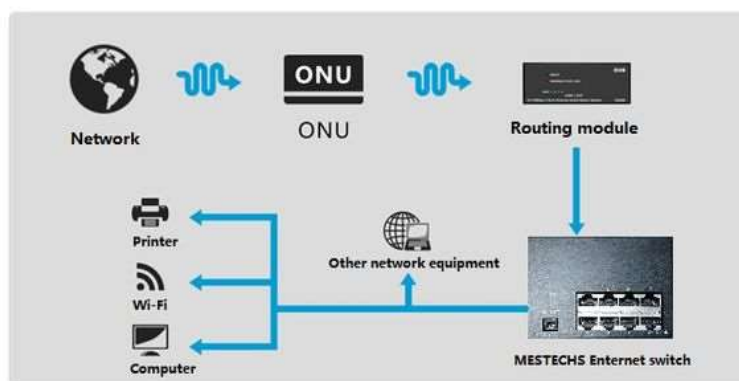
## MSG108 8 port Gigabit panel Ethernet switch POE 8 port DC output AC 220V input

MSG108 is an 8-port 10/100/1000m non-management Ethernet switch using RTL8370N-VB-CG chip. This product provides 8 10/100/1000mbps adaptive ports. With high integration design, it is small, light, easy to operate and suitable for small and medium-sized office and home networks. The use of store-and-forward technology, combined with dynamic memory allocation, ensures efficient allocation to each port. Traffic control ensures that the nodes avoid packet loss when transmitting and receiving. Compatible with 10base-tx, 1000base-t three network environment, port speed 10/100/1000 automatic matching. LED panel light dynamic display of power/network on and off. Input power limit protection to prevent power plug by mistake.

### Feature

- 8 10/100/1000m adaptive RJ45 ports;
- Standards: IEEE 802.3i, IEEE 802.3u, IEEE802.3x, IEEE802.3ab, IEEE802.3az;
- Flow control: full duplex adopts IEEE 802.3x standard, half duplex adopts Backpressure standard;
- Store-forward architecture;
- The UTP port supports the automatic negotiation function and automatically adjusts the transmission mode and rate.
- Support MAC address self-learning;
- Dynamic LED indicator provides simple working status prompt and troubleshooting;

### Application



## Hardware specifications

Model Name	MSG108
	8 port Gigabit panel Ethernet switch module
Standards	IEEE 802.3 10BASE-TX Fast Ethernet
	IEEE 802.3U 100BASE-TX Fast Ethernet
	ANSI/IEEE 802.3 N-Way Auto-negotiation
Protocol type	CSMA/CD
Port	10/100/1000 Mbps Switch Port(RJ-45 port)
Uplink port	Any port
Topological structure	Connected in star
Operating mode	Full duplex or half duplex
Network cable	10Base-T:5/6type twisted-pair,Up to 100 meters
	100Base-TX:6type twisted-pair,Up to 100 meters
	1000Base-TX:6/6+type twisted-pair,Up to 100 meters
Operating voltage	DC5V/1A



## Order Information

Product Description  
8 port Gigabit panel Ethernet switch

Order Code  
MSG108